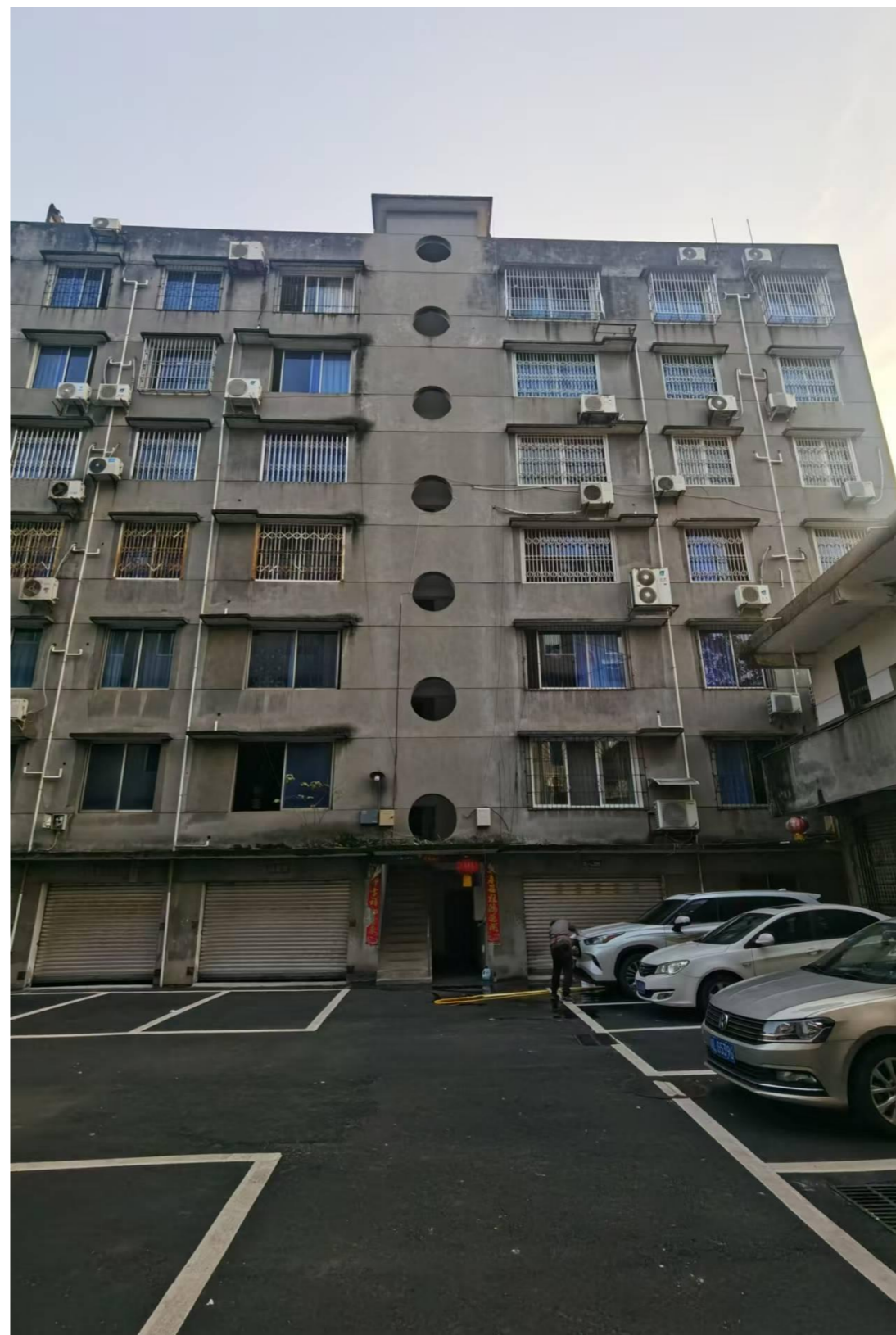




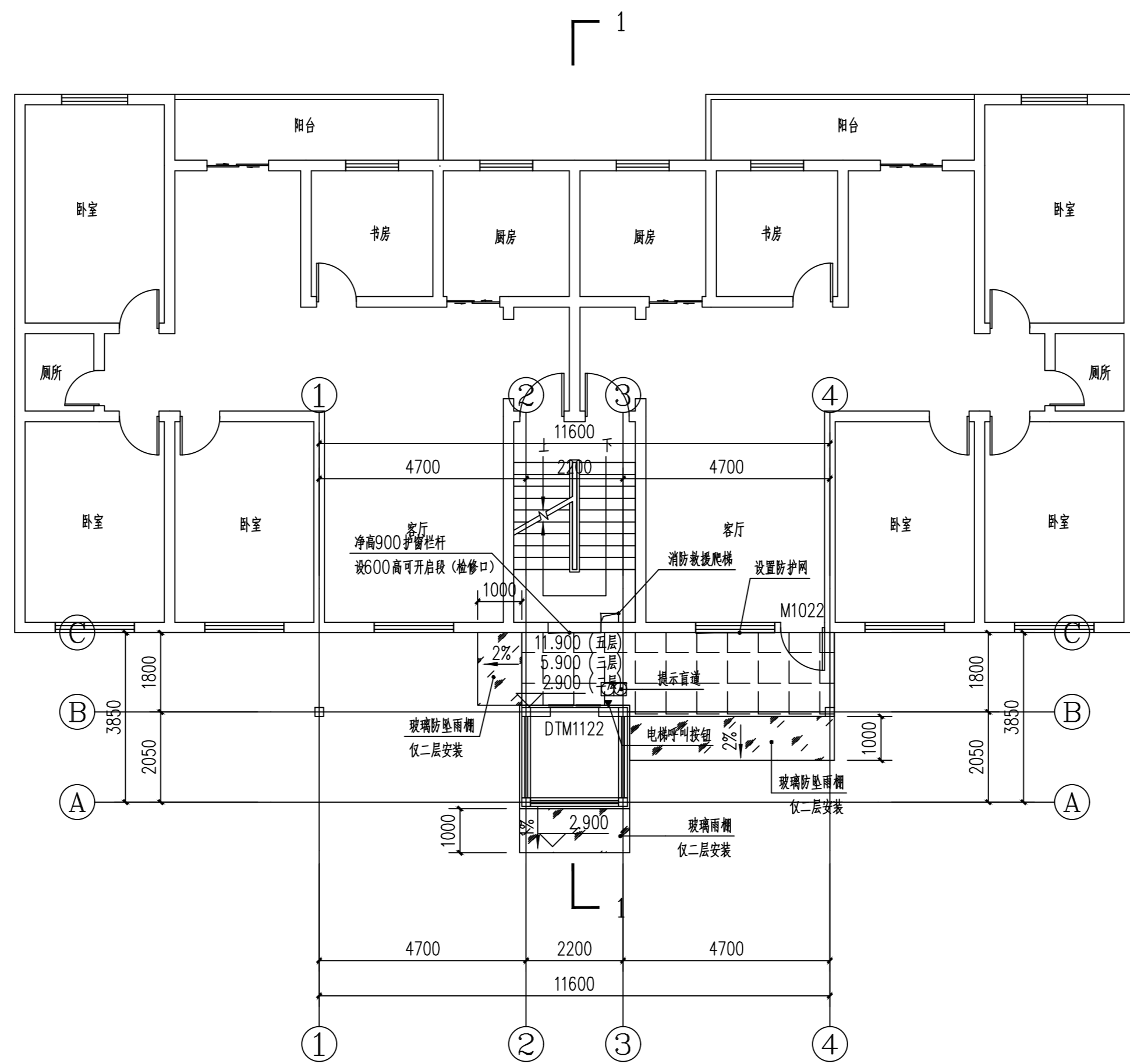
加装电梯后效果图



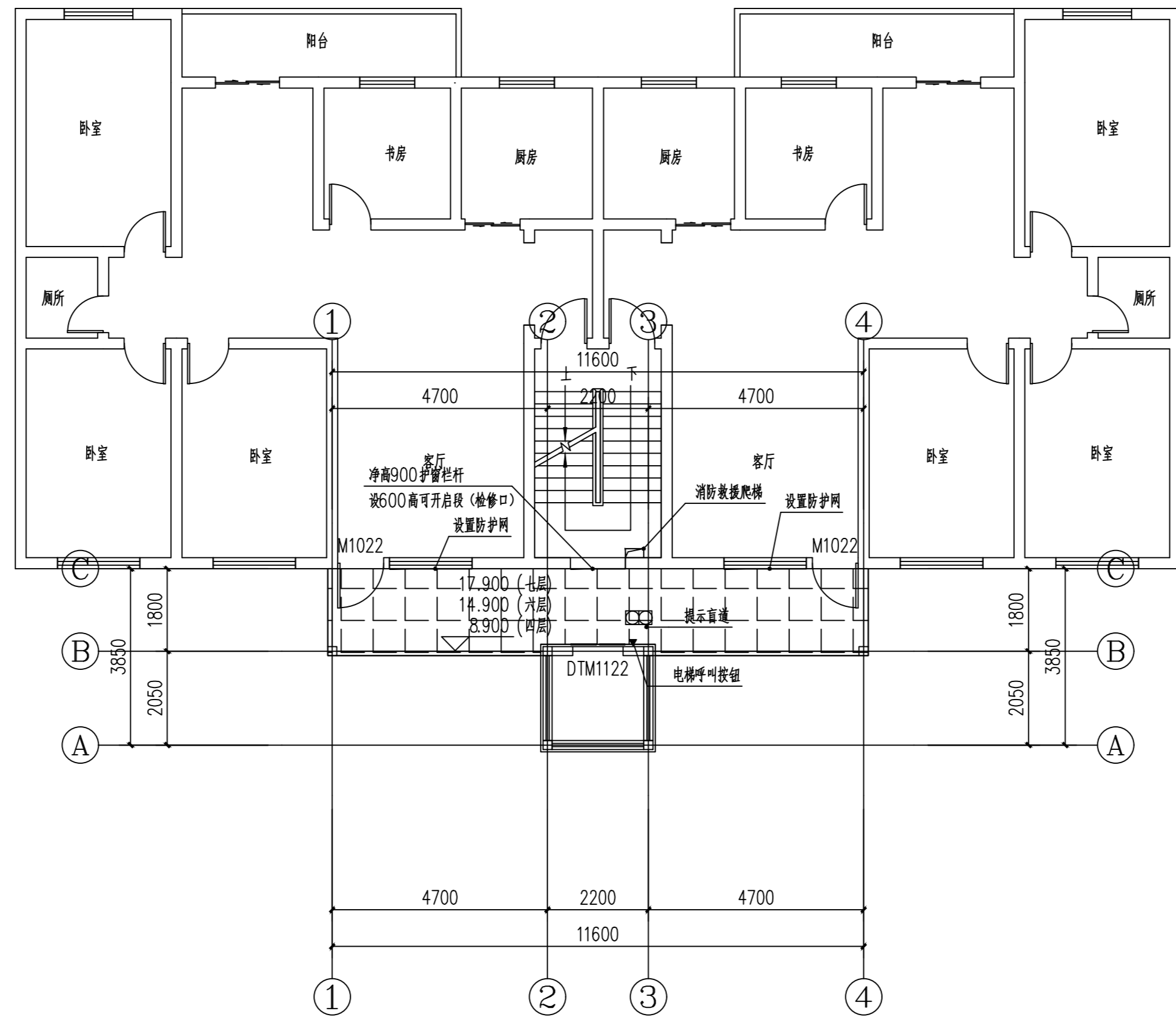
加装电梯前现状图



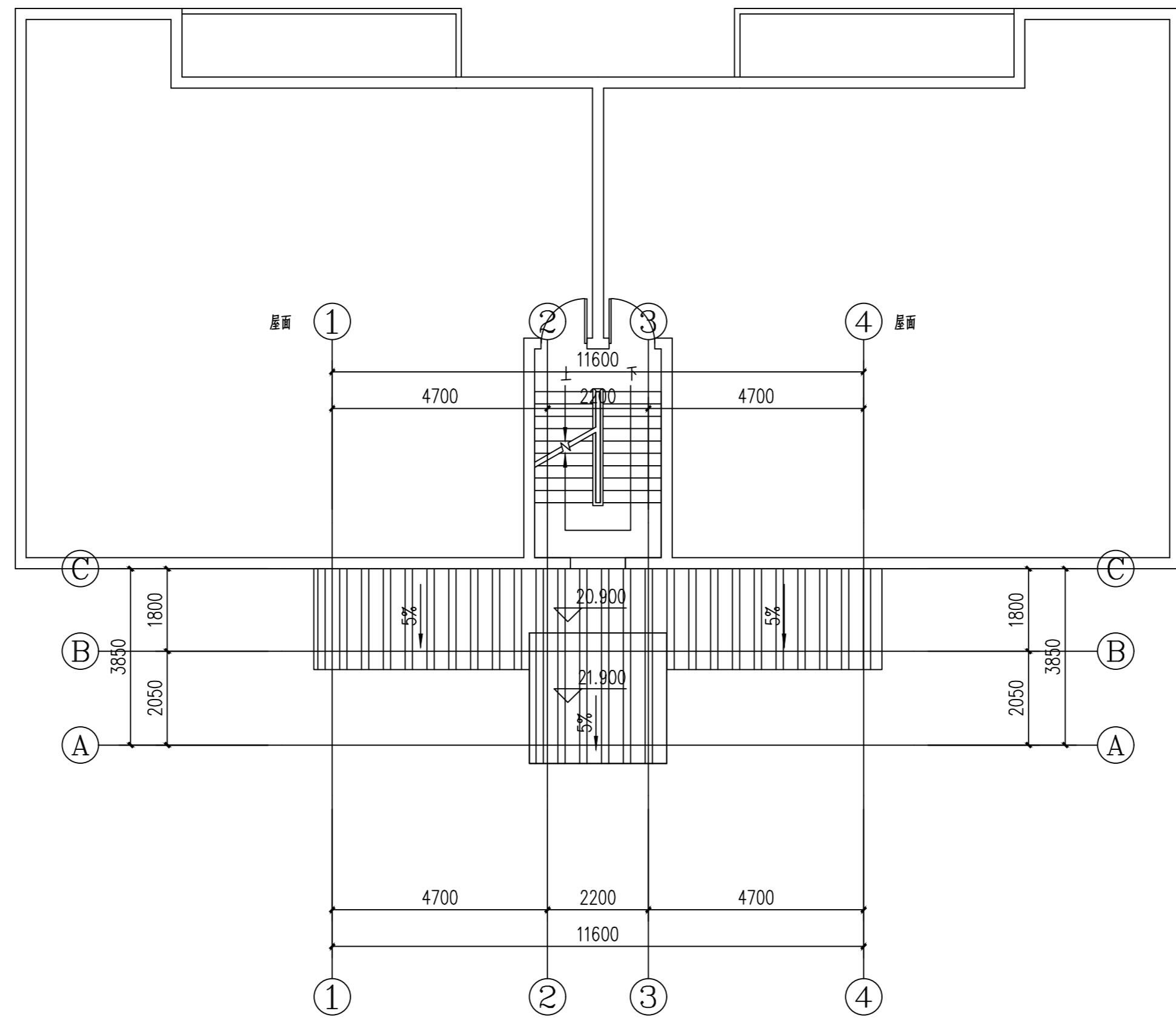




二、三、五层电梯加装平面布置图 1:100



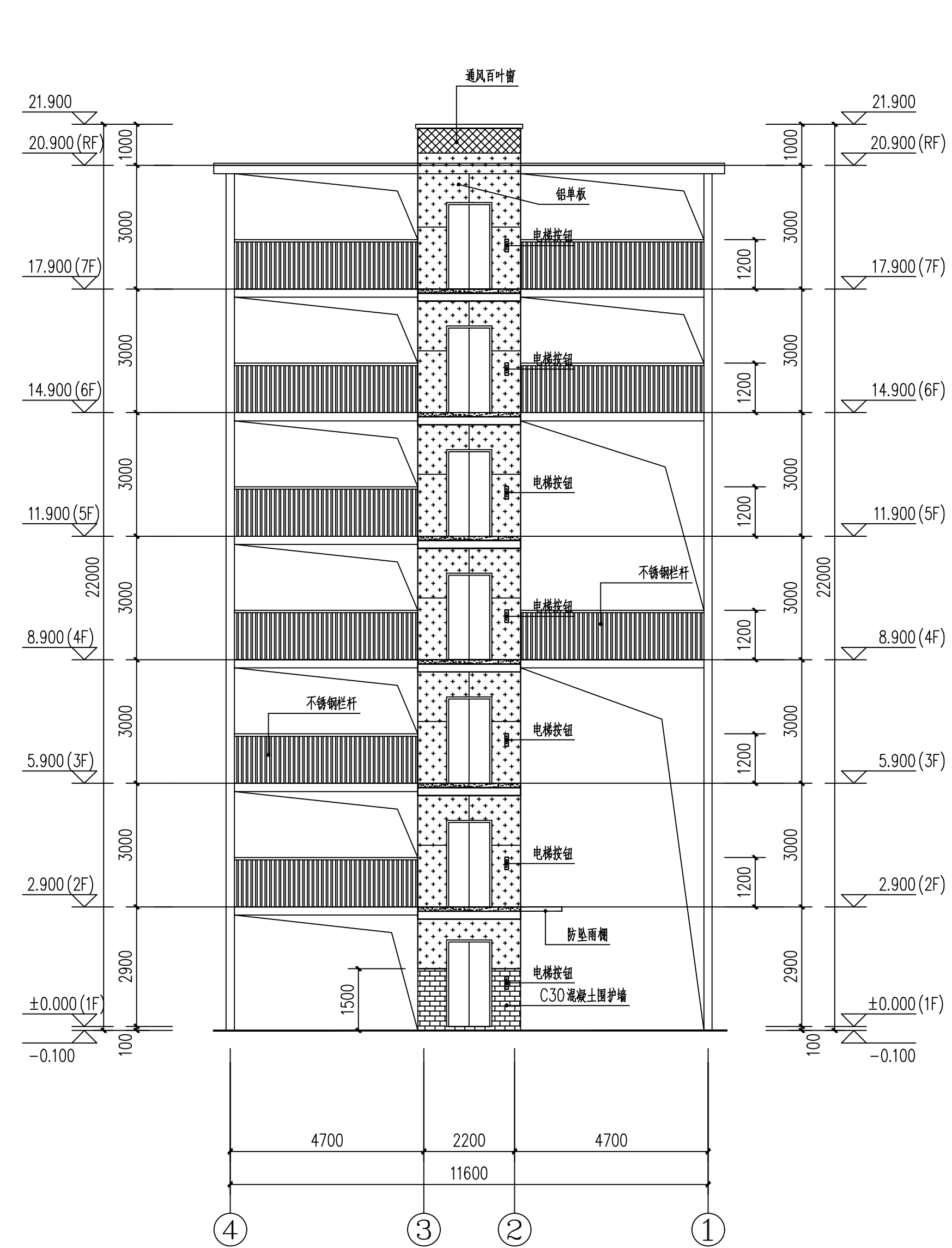
四、六、七层电梯加装平面布置图 1:100



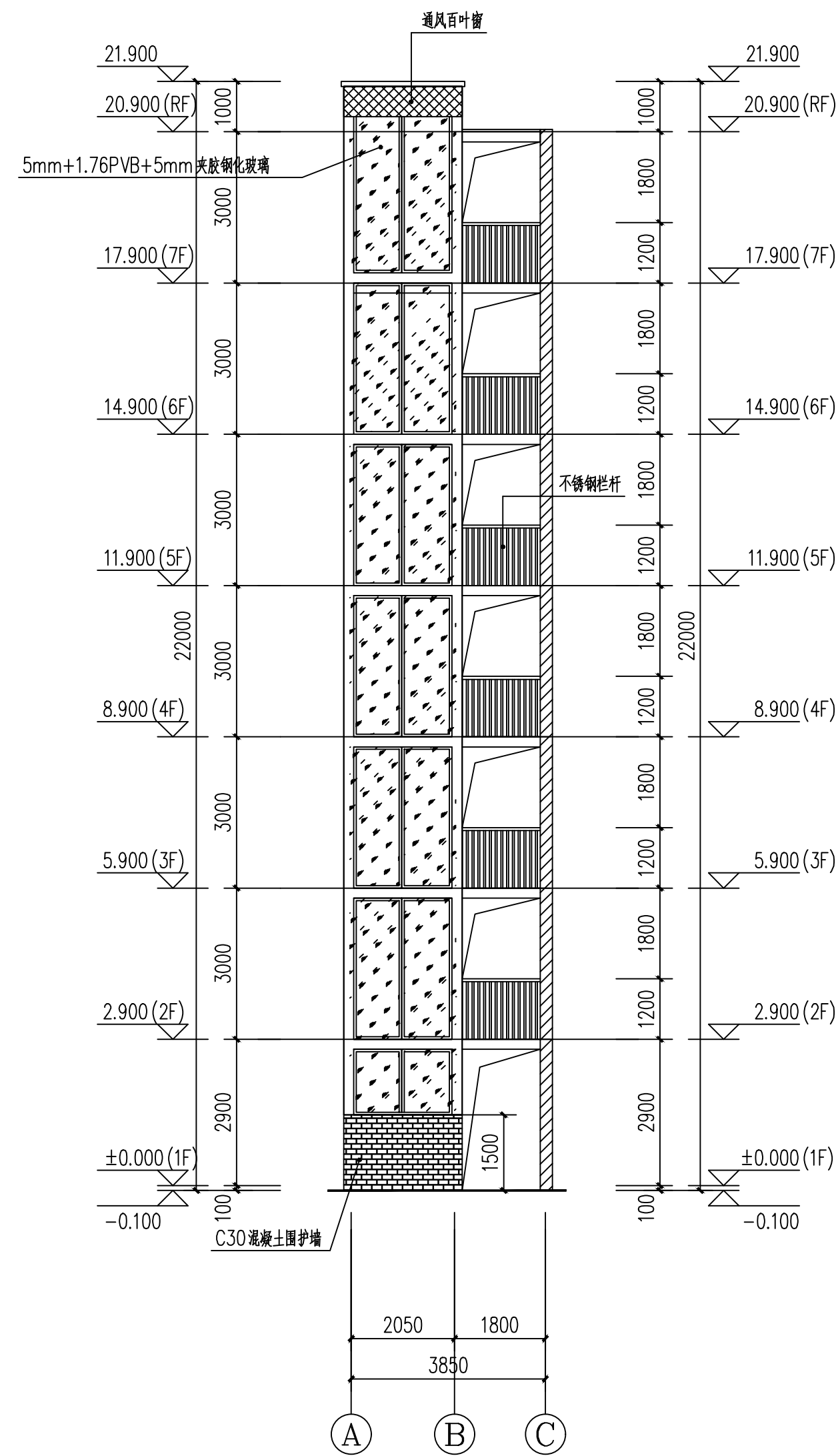
屋面电梯加装平面布置图 1:100



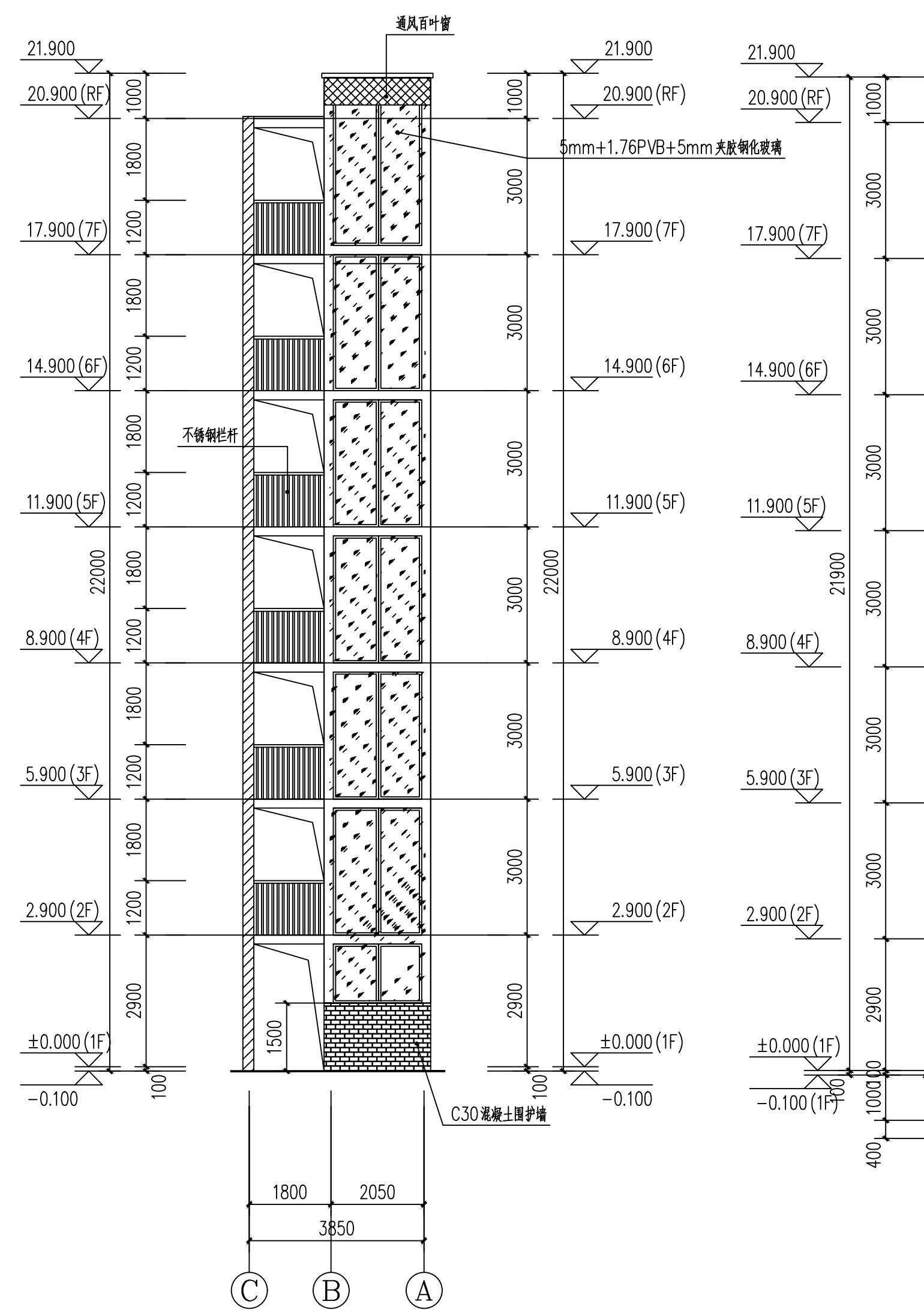
1~4轴电梯加装立面图 1:100



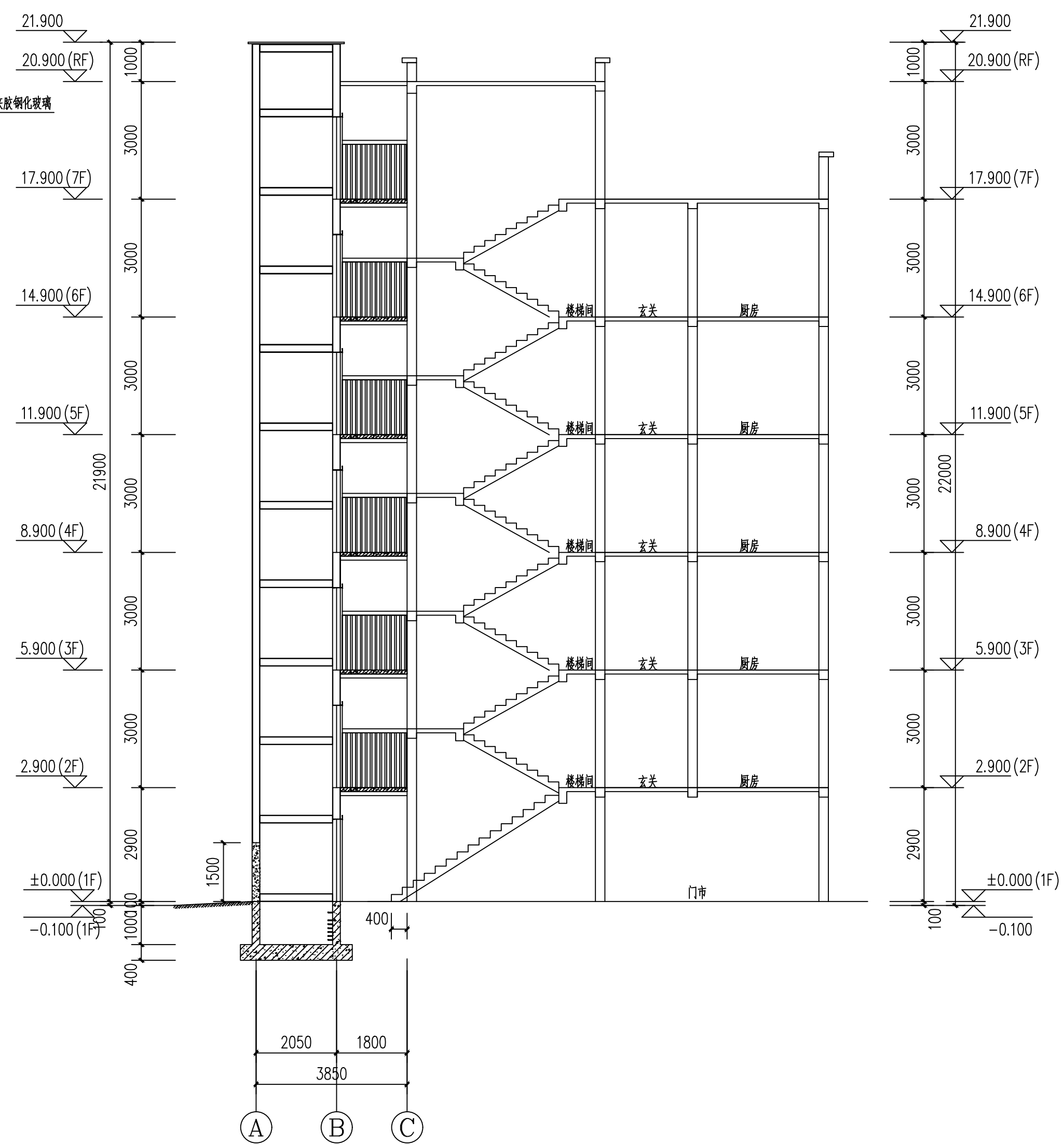
4~1轴电梯加装立面图 1:100



A~C轴电梯加装立面图 1:100



C~A轴电梯加装立面图 1:100



1-1 1:100